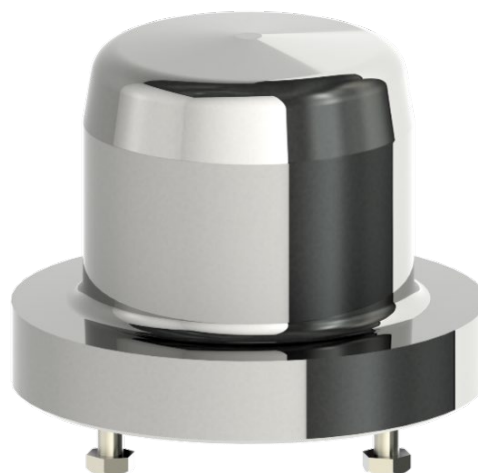
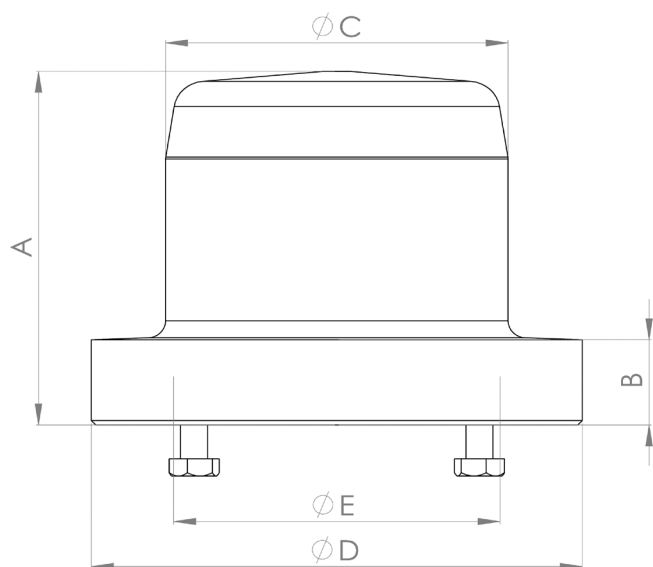


Truelev

Tank Plate Welded

The revolutionary Truelev with its bearing-less fully levitating technology is perfect for shear sensitive products. This product is our high-end mixer that offers a unique control and measuring capability.

Low Shear Applications



Measurements

Mixer model	Article Number	A mm (in)	B mm (in)	ØC mm (in)	ØD mm (in)	ØE mm (in)	Weight kg (lb)
ZF100	ZF12506-A03432	83 (3.27)	20 (0.79)	76.4 (3.01)	109.5 (4.31)	72.8 (2.87)	1.2 (2.7)
ZF160	ZF16506-A03304	132.5 (5.22)	45 (1.77)	121.6 (4.79)	168 (6.61)	117.8 (4.64)	5.2 (11.5)

General information

Material	Stainless Steel AISI 316L (1.4435) ASME SA-479 EN 10272 (PED) (Other materials are available upon request)
Certificate	EN10204 3.1
Surface Roughness	Ra ≤ 0.38 µm (15 µin)
Surface Treatment	Manually polished. Non animal origin polishing compounds are used.
Operating Temp	5°C - 135°C (41°F - 275°F)
pH Range	1 - 14
Design pressure	-1 - 10 barg (-14.5 - 145 psig)

mete  nova

www.metenova.com

Phone: +46 (0)31-335 95 00 | +1(908) 537 4199 | E-mail: info@metenova.com

The information in this publication is subject to change without prior notice. The information in this document is believed to be complete and accurate at the time of publication. Metenova assumes no responsibility for any errors that may appear in this document. Customer is responsible for determining Metenova's product will perform suitable in the intended application