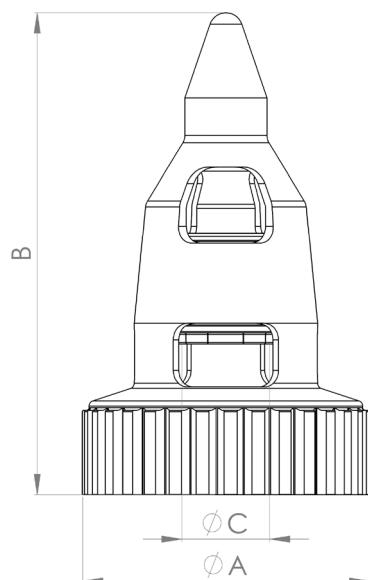


High Shear

Rotor

The High Shear mixer offer a rotor/stator aseptic magnetic mixer for critical fine emulsions and dispersions. It is ideal for emulsification applications, difficult to dissolve solids and particle downsizing.

Emulsification
and High Shear
Applications



Measurements

Mixer Model	Article Number	A mm (in)	B mm (in)	ID Female Sleeve ØC mm (in)	Weight kg (lb)
HS2	HS51511-03391	66 (2.60)	106 (4.18)	18 (0.71)	0.6 (1.32)
HS5	HS52511-01633	105 (4.13)	174 (6.86)	32 (1.26)	2.2 (4.9)
HS8	HS53511-03548	139 (5.47)	212 (8.35)	40 (1.57)	4.1 (9.0)

General Information

Material	Stainless Steel AISI 316L (1,4404) (Other materials are available upon request.)
Female Sleeve	Silicon Carbide (SiC)
O-rings	FDA & USP class VI compliant EPDM
Surface Roughness	Ra ≤ 0.38 µm (15 µin)
Surface Treatment	Electro polished. Non animal origin polishing compounds are used.
Operating Temp	5°C - 150°C (41°F - 302°F)
Design Pressure	-1 – 7 barg (-14.5 – 101.5 psig)
pH Range	1 – 14

Options	HS2	HS5	HS8
Option 1			
Silicone Platinum Cured o-rings in lieu of EPDM	ZG00013-04173	ZG00013-04174	ZG00013-04175



www.metenova.com

Phone: +46 (0)31-335 95 00 | +1(908) 537 4199 | E-mail: info@metenova.com

The information in this publication is subject to change without prior notice. The information in this document is believed to be complete and accurate at the time of publication. Metenova assumes no responsibility for any errors that may appear in this document. Customer is responsible for determining Metenova's product will perform suitable in the intended application