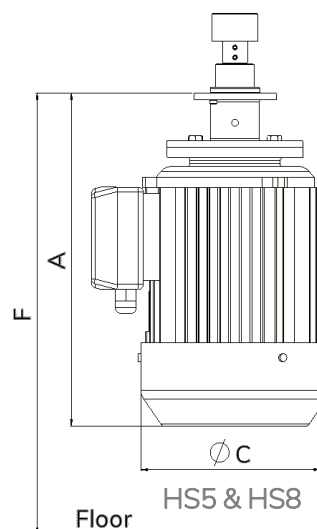
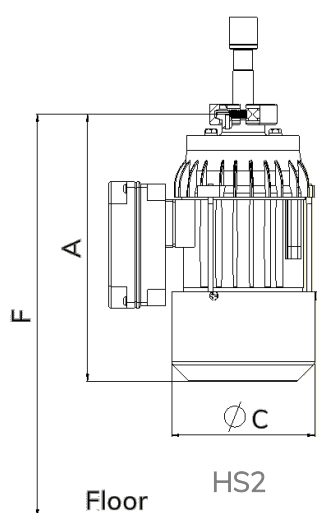


High Shear

Drive Unit

The High Shear mixer offer a rotor/stator aseptic magnetic mixer for critical fine emulsions and dispersions. It is ideal for emulsification applications, difficult to dissolve solids and particle downsizing.

Emulsification
and High Shear
Applications



Measurements

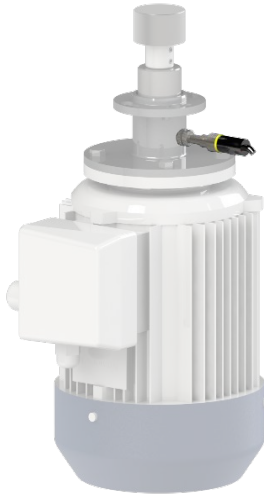
Mixer Model	Article Number	A mm (in)	F mm (in)	ØC mm (in)	Weight kg (lb)
HS2	HS51502-F03491	250 (9.82)	370 (14.57)	134 (5.28)	8 (17.2)
HS5	HS52502-F02111	338 (13.31)	440 (17.32)	194 (7.64)	24 (52.5)
HS8	HS53502-F03614	509 (20.04)	650 (25.59)	280 (11.02)	74 (163.8)

General Information

Mixer Model	HS2	HS5	HS8
Motor	0.37 kW / 0.50 hp @ 50 Hz 0.43 kW / 0.60 hp @ 60 Hz	2.2 kW / 2.95 hp @ 50 Hz 2.5 kW / 3.35 hp @ 60 Hz	7.5 kW / 10.06 hp @ 50 Hz 8.6 kW / 11.50 hp @ 60 Hz
Voltage	Δ230 / Y400 VAC @ 50 Hz Y460 VAC @ 60 Hz (±5%)	Δ230 / Y400 VAC @ 50 Hz Y460 VAC @ 60 Hz (±5%)	Δ400 / Y690 VAC @ 50 Hz Δ460 VAC @ 60 Hz (±5%)
Current	1.65 A @ 230 V / 50 Hz 0.95 A @ 400 V / 50 Hz 0.95 A @ 460 V / 60 Hz	7.5 A @ 230V / 50 Hz 4.3 A @ 400V / 50 Hz 4.1 A @ 460V / 60 Hz	13.3 A @ 400 V / 50 Hz 7.7 A @ 690 V / 50 Hz 13.2 A @ 460 V / 60 Hz
Efficiency Performance Class	IE3		
Thermal Protection	PTC 140°C		
Certified	CE / c-UL-us		
Protection Class	IP55		
Environment Temperature	0°C - 40°C (32°F - 104°F)		
Max Speed	3900 rpm (@ 65 Hz) (based on nominal motor data)		3500 rpm (@ 60 Hz) (based on nominal motor data)
Paint	Coating in compliance with FDA		

Option: RPM Sensor, Shaft

Article Number	ZG00014-03193
Type	Inductive RPM Sensor, Shaft
Pulses/Turn	4
Output Function	4-wire, contacts PNP
Indicator	Yellow LED
Temperature Range	-25°C-70°C (-13°F-158°F)
Operation Voltage	10..30 VDC
Protection Class	IP67



mete  nova

www.metenova.com

Phone: +46 (0)31-335 95 00 | +1(908) 537 4199 | E-mail: info@metenova.com

The information in this publication is subject to change without prior notice. The information in this document is believed to be complete and accurate at the time of publication. Metenova assumes no responsibility for any errors that may appear in this document. Customer is responsible for determining Metenova's product will perform suitable in the intended application