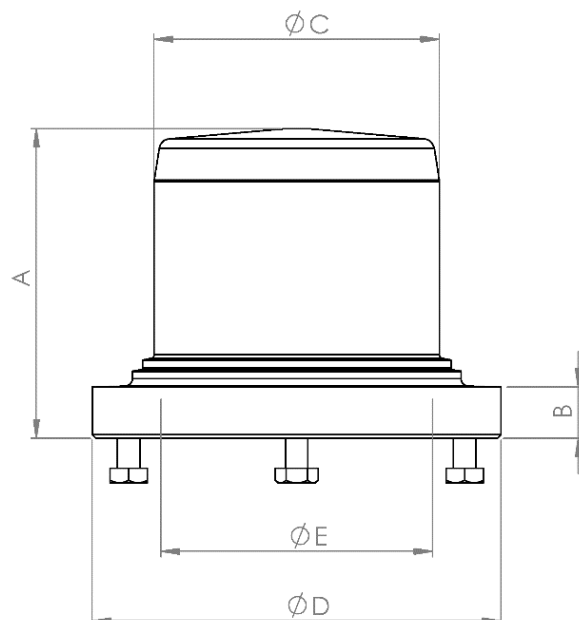


# Truelev

## Tank Plate Welded Mobile

The revolutionary Truelev with its bearing-less fully levitating technology is perfect for shear sensitive products. This product is our high-end mixer that offers a unique control and measuring capability. This version of Truelev makes it possible to move and transport a vessel with the Mix Head mounted inside, without having the Drive Unit connected.

Low Shear Applications



### Measurements

Mixer model	Article Number	A mm (in)	B mm (in)	ØC mm (in)	ØD mm (in)	ØE mm (in)	Weight kg (lb)
ZF100	ZFM12506-A06053	83 (3.27)	14 (0.55)	76.4 (3.01)	109.5 (4.31)	72.8 (2.87)	1.1 (2.4)
ZF160	ZFM16506-A06041	132.5 (5.22)	40 (1.57)	121.6 (4.79)	168 (6.61)	117.8 (4.64)	4.9 (10.8)

### General information

<b>Material</b>	Stainless Steel 316L /EN 1.4435 ASME SA-479 EN 10272 (PED) (Other materials are available upon request)
<b>Inspection of Certificate</b>	EN 10204 3.1
<b>Surface Roughness</b>	Ra ≤ 0.38 µm (15 µin)
<b>Surface Treatment</b>	Manually polished. Non animal origin polishing compounds are used.
<b>Operating Temp</b>	5°C – 135°C (41°F – 275°F)
<b>pH Range</b>	1 – 14
<b>Design Pressure</b>	-1 – 10 barg (-14.5 – 145 psig)

Metenova



[www.metenova.com](http://www.metenova.com)

Phone: +46 (0)31-335 95 00 | +1(908) 537 4199 | E-mail: [info@metenova.com](mailto:info@metenova.com)

The information in this publication is subject to change without prior notice. The information in this document is believed to be complete and accurate at the time of publication. Metenova assumes no responsibility for any errors that may appear in this document. Customer is responsible for determining Metenova's product will perform suitable in the intended application