

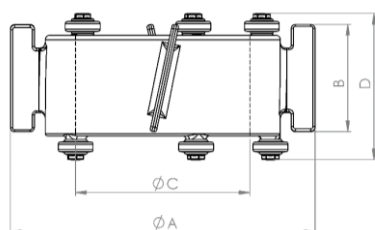
Truelev

Mix Head Mobile

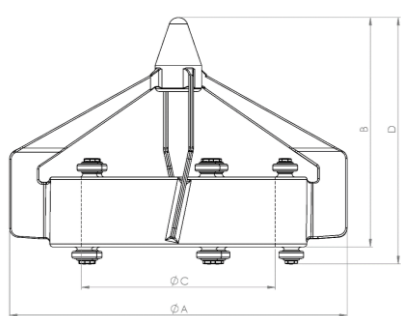
The revolutionary Truelev with its bearing-less fully levitating technology is perfect for shear sensitive products. This product is our high-end mixer that offers a unique control and measuring capability. This version of Truelev makes it possible to move and transport a vessel with the Mix Head mounted inside, without having the Drive Unit connected.

Low Shear Applications

ZFM100



ZFM160



Measurements

Mixer model	Article Number	ØA mm (in)	B mm (in)	ØC mm (in)	D mm (in)	Weight kg (lb)
ZFM100	ZFM12509-A05471	140 (5.51)	51 (2.01)	80.1 (3.15)	67 (2.64)	1.6 (3.4)
ZFM160	ZFM16509-A05476	220 (8.66)	147.8 (5.82)	125.1 (4.93)	158.8 (6.25)	3.5 (7.7)

General information

Material	Stainless Steel ASME TP 316L acc. to SA-479 & EN 1.4435 acc. to EN 10272 (Other materials are available upon request)
Inspection Certificate	EN 10204 type 3.1
O-rings	EPDM; FDA CFR21 §177.2600 & USP Class VI
Bumpers	Polyetheretherketone (PEEK); FDA CFR21 §177.2415 & USP Class VI
Surface Roughness	Ra ≤ 0.38 µm (15 µin)
Surface Treatment	Electropolished. Non animal origin polishing compounds are used.
Operating Temp	5°C – 135°C (41°F – 275°F)
Operating Pressure	-1 – 7 barg (-14.5 – 101.5 psig)
Packing and Marking	Items are individually packed and for traceability purposes marked with item & id no.
Quality Assurance	Metenova Quality Assurance system ensures the quality and traceability at all stages of the process

Options

Mixer model	Option 1 Silicone platinum cured O-rings in lieu of EPDM	Option 2 FFKM O-rings in lieu of EPDM
ZFM100	ZFMX00013-07179	ZFMX00013-07238
ZFM160	ZFMX00013-07179	ZFMX00013-07238

mete  nova

www.metenova.com

Phone: +46 (0)31-335 95 00 | +1(908) 537 4199 | E-mail: info@metenova.com

The information in this publication is subject to change without prior notice. The information in this document is believed to be complete and accurate at the time of publication. Metenova assumes no responsibility for any errors that may appear in this document. Customer is responsible for determining Metenova's product will perform suitable in the intended application