

Tools

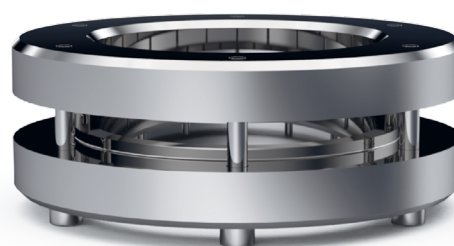
Welding

Tools & Accessories

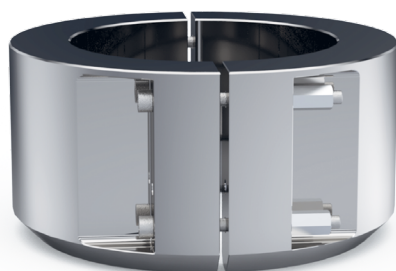
The line Tools & Accessories contains a set of tools that will enhance and/or simplify the handling of Metenova's products. The use of the welding tool will prevent deformation of the tank plate during welding and ensure a safe installation.



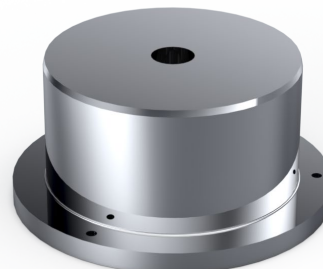
Tool for Welded Tank Plates



Tool for Flanged Tank Plates



Tool for Welded Tank Plates
(ZG11, ZG12)



Gauge for ZF & ZFM

General information

Material	Welding tools ZG, ZF, ZFM, HP, ZGB	Stainless Steel ASME TP 316L/ EN 1.4404, or Aluminum
	Welding tools HS	Aluminum
	Gauge	Aluminum
Packing and Marking	Items are individually packed and for traceability purposes marked with item number.	
Quality Assurance	Metenova Quality Assurance system ensures the quality and traceability at all stages of the process.	

Welding Tools

Part #		Compatible with
Welding tool for Welded Tank Plates		
ZG00016-00959	ZG- Welding Tool, Tank Plate [ZG1, ZG2, HP2]	ZG1 • ZG2 • HP2
ZG00016-00506	ZG- Welding Tool, Tank Plate [ZG3, ZG5, HP5]	ZG3 • ZG5 • HP5
ZG00016-00507	ZG- Welding Tool, Tank Plate [ZG6, ZGB1]	ZG6 • ZGB1
ZG00016-00508	ZG- Welding Tool, Tank Plate [ZG7, HP8, ZGB2]	ZG7 • HP8 • ZGB2
ZG00016-00509	ZG8 Welding Tool, Tank Plate	ZG8
ZG00016-00510	ZG9 Welding Tool, Tank Plate	ZG9
ZG00016-00511	ZG10 Welding Tool, Tank Plate	ZG10
ZG64016-3013204	ZG- Welding Tool, Tank Plate [ZG11, ZG12]	ZG11 • ZG12
HS51016-04563	HS2 Welding Tool, Tank Plate	HS2
HS52016-03488	HS5 Welding Tool, Tank Plate	HS5
HS53016-05100	HS8 Welding Tool, Tank Plate	HS8
ZF12016-04222	ZF- Welding Tool, Tank Plate [ZF100 • ZFM100]	ZF100 • ZFM100
ZF00016-02226	ZF- Welding Tool, Tank Plate [ZF160 • ZFM160]	ZF160 • ZFM160
Welding tool for Flanged Tank Plates		
ZG00016-01764	ZG- Welding Tool Flanged TP [ZG1, ZG2, HP2, HS2]	ZG1 • ZG2 • HP2 • HS2
ZG00016-00708	ZG- Welding Tool Flanged TP [ZG3, ZG5, HP5, HS5]	ZG3 • ZG5 • HP5 • HS5
ZG00016-01765	ZG- Welding Tool Flanged TP [ZG6, ZGB1]	ZG6 • ZGB1
ZG00016-01766	ZG- Welding Tool Flanged TP [ZG7, ZF100, ZFM100, ZGB2]	ZG7 • ZF100 • ZFM100 • ZGB2
ZG00016-01767	ZG- Welding Tool Flanged TP [ZG8, HP8, HS8]	ZG8 • HP8 • HS8
ZG00016-01768	ZG- Welding Tool Flanged TP [ZG9, ZF160, ZFM160]	ZG9 • ZF160 • ZFM160
ZG00016-01769	ZG10 Welding Tool Flanged TP	ZG10
Gauge		
ZF12016-04223	ZF- Gauge [ZF100 • ZFM100]	ZF100 • ZFM100
ZF16504-02195	ZF- Gauge [ZF160 • ZFM160]	ZF160 • ZFM160